



MYTIME

YOUNG CARERS

REPORT ON SCHOOL CENSUS DATA 2024

REPORT ON SCHOOL CENSUS DATA 2024

HEADLINES

Schools in Bournemouth, Christchurch, and Poole (BCP) identified the highest percentage of young carers in England in the 2023-2024 school census (data published June 2024).

Schools in Dorset and on the Isle of Wight were in the top 10% across England.



Local authority	School type	2024	National	2023	Change
BCP	Primary	1.9%	0.5%	1.4%	+0.5
	Secondary	3.2%	0.9%	2.5%	+0.7
	AP	5.5%	0.3%	4.0%	+1.5
Dorset	Primary	0.6%	0.5%	0.2%	+0.4
	Secondary	0.9%	0.9%	0.4%	+0.5
	AP	1.6%	0.3%	1.5%	-0.1
Isle of Wight	Primary	0.4%	0.5%	0.3%	+0.1
	Secondary	1.9%	0.9%	1.0%	+0.9
	AP	0.0%	0.3%	0.0%	0

BACKGROUND

In 2020, **MYTIME** Young Carers designed and launched the **MYTIME** Level Up Programme. This programme was designed by young carers, teachers, and senior leaders in schools to help provide schools with the knowledge, tools, and skills they need to identify young carers and to support them.

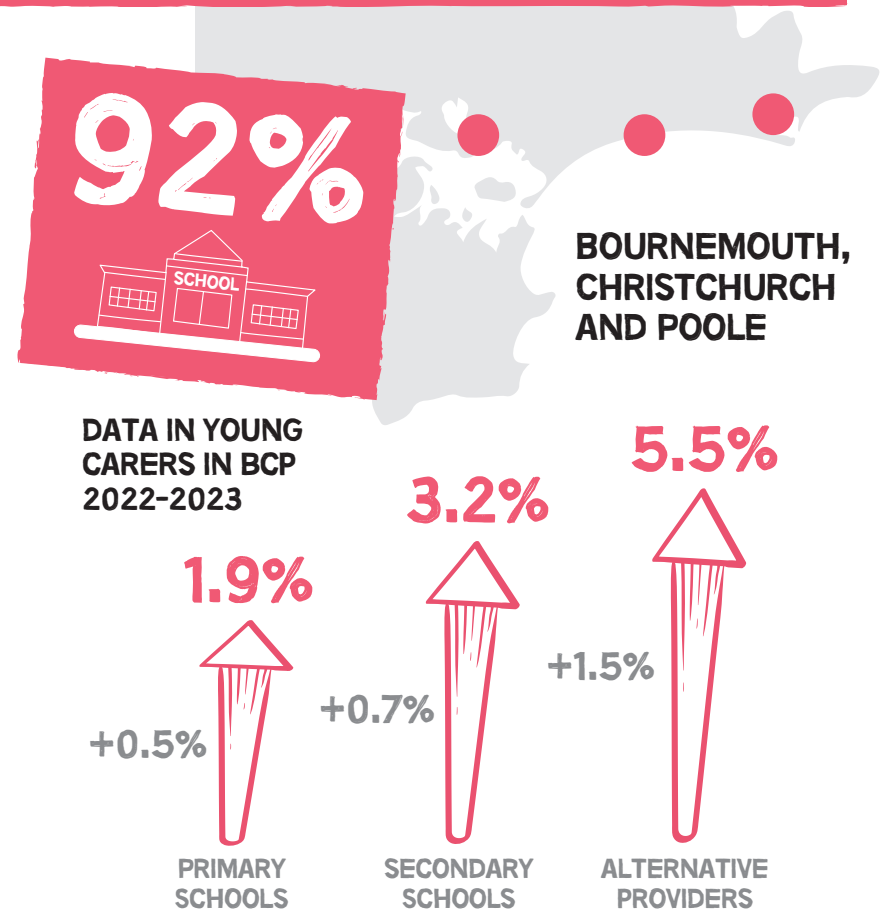
This programme launched in 2021 to schools in Bournemouth, Christchurch, and Poole (BCP), to Dorset schools in 2022 and to schools on the Isle of Wight in 2023.



2024 SCHOOL CENSUS DATA: BOURNEMOUTH, CHRISTCHURCH, AND POOLE

MYTIME is currently partnered with **92%** of primary, secondary, and alternative provision schools in BCP. MYTIME has been working with schools in the BCP area since 2020-2021.

- ▷ BCP primary schools identified the highest percentage of young carers in England, identifying **1.9%** of pupils as young carers in comparison to the national average of 0.5%. This is an increase of 0.5%, from 1.4% in 2022-2023.
- ▷ BCP secondary schools identified the highest percentage of young carers in England, identifying **3.2%** of pupils as young carers in comparison to the national average of 0.9%. This is an increase of 0.7% from 2.5% in 2022-2023.
- ▷ BCP alternative provision providers identified the second highest percentage of young carers in England, identifying **5.5%** of pupils as young carers in comparison to the national average of 0.3%. This is an increase of 1.5 % from 4% in 2022-2023.

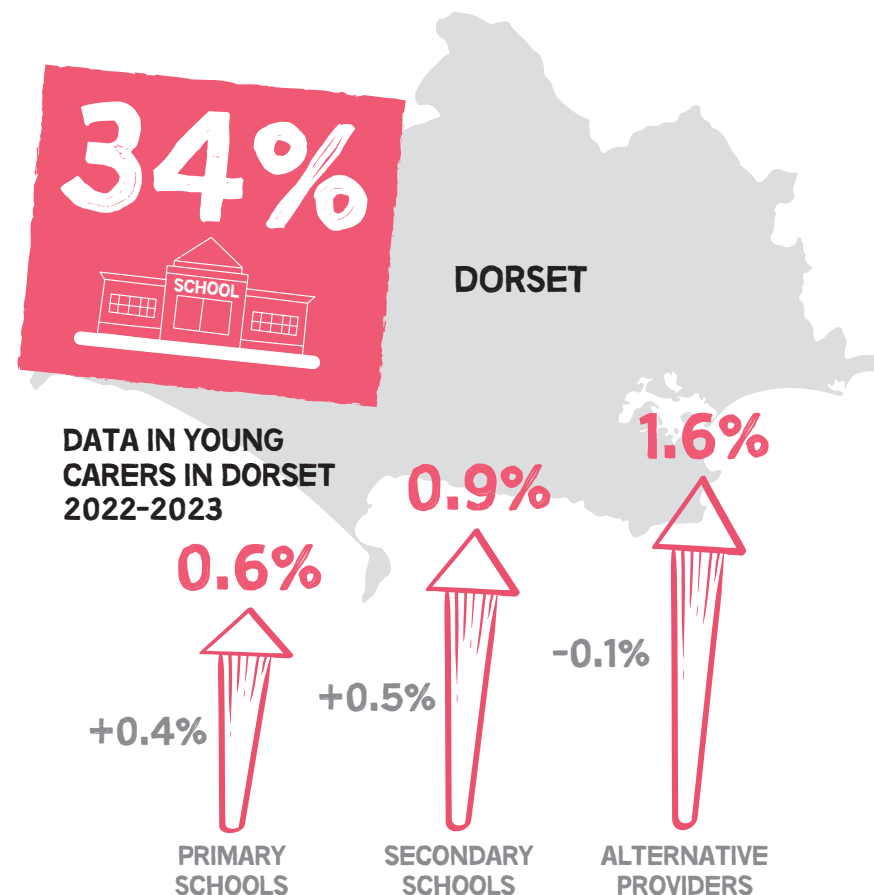


"PRIOR TO THE TRAINING MYTIME DELIVERED TO OUR STAFF ONLY 34% AGREED THEY WOULD BE CONFIDENT IDENTIFYING YOUNG CARERS, SINCE THE TRAINING WAS DELIVERED, THIS HAS INCREASED TO 100%."

2024 SCHOOL CENSUS DATA: DORSET

MYTIME is currently partnered with **34%** of primary, secondary, and alternative provision schools in Dorset. The percentage of schools MYTIME is working with in Dorset has increased gradually since 2022, however this has been constrained due to funding.

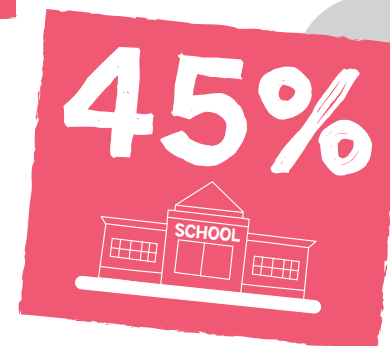
- ▷ Dorset primary schools were in the top **10%** of local authorities in England, identifying 0.6% of pupils as young carers in comparison to the national average of 0.5%. This is an increase of 0.4%, from 0.2% in 2022-2023.
- ▷ Dorset secondary schools were in the top **10%** of local authorities in England, identifying 0.9% of pupils as young carers which is now in line with the national average of 0.9%. This is an increase of 0.5% from 0.4% in 2022-2023.
- ▷ Dorset alternative provision providers identified **1.6%** of their pupils as young carers in comparison to the national average of 0.3%. This is a decrease of 0.1% from 1.7% in 2022-2023.



"SINCE THE MYTIME TEAM CAME IN AND DELIVERED TRAINING ON HOW TO IDENTIFY AND SUPPORT YOUNG CARERS IN OUR SCHOOL, THE PASTORAL AND LEADERSHIP TEAM HAVE IDENTIFIED OVER 30 PUPILS WHO HAVE A CARING RESPONSIBILITY WHICH WAS PREVIOUSLY UNKNOWN ABOUT. WHEN WE EXPLORED THE ATTENDANCE AND ATTAINMENT OF THESE PUPILS, WE BECAME INCREASINGLY CONCERNED. HAD WE NOT ATTENDED THE TRAINING, WE WOULD HAVE BEEN UNAWARE OF THE ISSUES YOUNG CARERS WERE FACING AND MISSED KEY OPPORTUNITIES TO PROVIDE SUPPORT AND INTERVENTION TO THESE PUPILS MOVING FORWARD."

2024 SCHOOL CENSUS DATA: ISLE OF WIGHT

MYTIME is currently partnered with **45%** of primary and secondary schools on the Isle of Wight. We have yet to start working with alternative provision providers. The percentage of schools **MYTIME** is working with on the Isle of Wight has increased since 2023, and we are now working with all but one secondary school on the island.



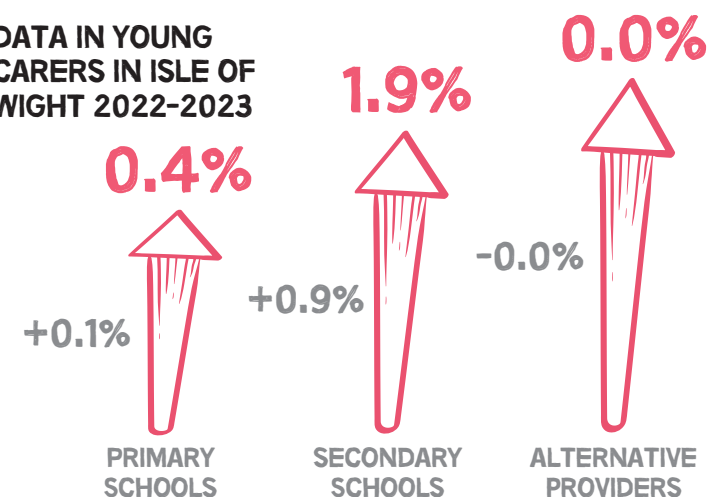
ISLE OF
WIGHT

▶ Isle of Wight identified **0.4%** of pupils as young carers in comparison to the national average of 0.5%. This is an increase of 0.1%, from 0.3% in 2022-2023.

▶ Isle of Wight secondary schools were in the top **10%** of local authorities in England, identifying 1.9% of pupils as young carers in comparison to the national average of 0.9%. This is a significant increase of 0.9% from 1.0%.

▶ Isle of Wight alternative provision providers identified **0.0%** of their pupils as young carers in comparison to the national average of 0.3%.

DATA IN YOUNG CARERS IN ISLE OF WIGHT 2022-2023



"THANKS FOR PUTTING THIS AT THE FOREFRONT OF OUR TEACHER-MINDS. IT IS SO IMPORTANT THAT WE TAKE AN EXTRA MOMENT TO THINK ABOUT WHAT EACH OF OUR PUPILS ARE DEALING WITH. AS KIDS, THEY WON'T KNOW THEIR LIFE IS ANY DIFFERENT OR SPECIAL AND MAY WANT AND NEED TO ASK FOR HELP, BUT THEY NEED US TO BE THE ONES TO SEE THEM AND OFFER SUPPORT."

NATIONAL DATA

72% of schools recorded no young carers in 2023- 2024, which is a slight improvement from 79% in 2022-2023.

In the 2023-2024 census 54,000 pupils were identified as young carers, which is an increase from **39,000** in 2022/23. However, this increase should be treated with caution as the estimated number of young carers in England is 1 million.

Secondary schools identified the highest percentage of young carers at **0.9%** (32,500 pupils) and **0.5%** of primary pupils (21,000) were identified as young carers.

NATIONAL AVERAGES

- ▷ **0.6%** of total number of school pupils in England identified as young carers
- ▷ **0.5%** of total number of **primary** pupils in England identified as young carers
- ▷ **0.9%** of total number of **secondary** pupils in England identified as young carers
- ▷ **0.3%** of total number of **alternative provider** pupils in England identified as young carers



Young carers carry immense responsibility in providing care and support at home, but their own needs may remain 'hidden' from wider view. The increased pressures young carers have faced due to the pandemic has further highlighted the need to improve formal identification of this cohort in schools, understand their needs and to provide early help as outlined in statutory guidance on keeping children safe in education. Working together to safeguard children also outlines how school and college staff should be particularly alert to the potential need of early help for students who have taken on caring responsibilities.



MYTIME

YOUNG CARERS

 01202 710701

 enquiries@mytimeyoungcarers.org

 www.mytimeyoungcarers.org

